

JICC EXTENDED TRAINER (JET)TM

ENABLING THE TDL WARRIOR



TRAIN, TEST, DIAGNOSE AND REHEARSE COMPLEX TACTICAL DATA LINK (TDL) NETWORK OPERATIONS.

FEATURES:

- **Command and Control planning** — Create Mission Plans, generate Control Orders and visualize the battlespace.
- **Training scenarios** — Simulate live operational environments, develop and execute training scenarios.
- **Operational training** — Operator training occurs on operational systems that have simulated training data as well as Tasking and Control Orders received from the planning systems.
- **Network management training** — Train the Link 16 Network Manager to plan, manage and troubleshoot the TDL networks implemented by JTIDS, MIDS, STT, TTR and JTRS terminals.

OVERVIEW

The Joint Interface Control Cell (JICC) Extended Trainer (JET) solution is an integrated suite of training and simulation tools for training Joint Interface Control Officers (JICOs) and their teams, providing an avenue to not only train but also test, diagnose and rehearse real-time scenarios without interruption to ongoing operations. The JET solution, the only complete TDL JICO training package available in today's marketplace is produced by Ultra Electronics, Advanced Tactical Systems (Ultra), a proven leader in Command and Control (C2) and TDL technologies.

On the training side, the JET tool-suite saves the JICO and TDL team valuable time, resources and scarce travel dollars by allowing training to take place in a classroom or at normal duty stations as time permits. On the planning side, the JET solution is critical for the JICO as complex TDL network scenario testing can

occur without the associated cost of putting equipment (air/land/sea) in place.

The JET integrated product suite is a complete end-to-end solution, covering the entire breadth of the JICO's job, including Mission Planning, TDL execution, C2, link monitoring, MIDS terminal emulation and After Action Review.

JET training takes place on a live, virtual and constructive system that simulates the full scope of the JICO's operational TDL and C2 environment. The JET solution's fully integrated capabilities diagnose real-world issues with radars, Link 16 load files, line-of-sight obstructions, and many other dynamic issues in a network.

The JET suite is both a classroom tool and supports operational needs by allowing the JICO to produce and load OPTASKLINKs (OTLs), Air Tasking Orders (ATOs),

and Airspace Control Orders (ACOs) directly into JET's simulation and execution suite. The JICO can train against tomorrow's ATO and use After Action Reviews to view recorded data to review, diagnose, teach and act on problem areas.

The use of TDL simulation scenarios brings operational knowledge, aiding the JICO's team in diagnosing and understanding future real-world scenarios in their Area of Responsibility (AOR).

The JET solution is critical as it replaces outdated slide and spreadsheet technology. The JICO can manage and troubleshoot complex TDL networks, rehearse and execute Mission Plans, visualize the battlespace and identify potential issues before they become an operational reality. The JET solution fully embraces the military motto, "Fight as you train, train as you fight."

Advanced Tactical Systems

Ultra
ELECTRONICS

THE JICC EXTENDED TRAINER (JET) SOLUTION IS AN INTEGRATED PRODUCT SUITE UTILIZING BEST-OF-CLASS TRAINING AND SIMULATION TOOLS.

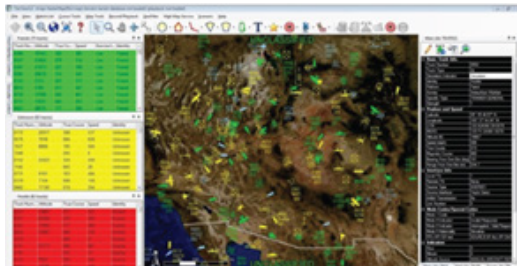
JET's integrated product suite consists of capabilities for Mission Planning, Tactical Visualization, Constructive Environment, MIDS Terminal Emulation, Link Monitoring and After Action Reviews. The JET capabilities are considered best-of-class technologies and are detailed below:

Mission Planning with C2Core® — Create ACOs, ATOs and OTLs.

C2Core provides near real-time battlespace information that enables planners to visualize and generate battle plans that are accurate and appropriate to developing situations. Once the Mission Plan is created, the output of the OPTASKLINK, ATO and ACO is directly imported into JET's simulation system (ASCOT) and the TDL C2 system (Air Defense Systems Integrator [ADSI]®) for display and processing.



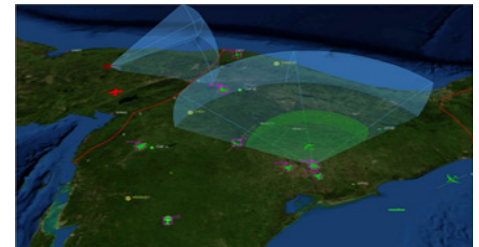
Mission Planning



Tactical Visualization

ADSI and TacViewC2™ — Perform C2 operations and view the operational picture.

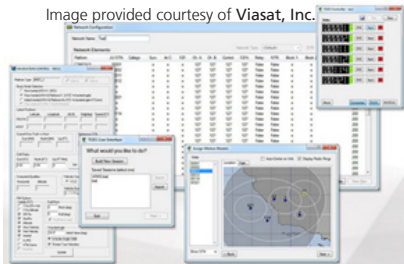
JET's C2 and TDL capabilities are based off of proven and certified ADSI software. State-of-the-art TacViewC2 situational awareness software, provides leading-edge display and enhanced 3D visualization. Using these integrated C2 and tactical visualization tools makes managing the track picture an intuitive and simplified operation.



Constructive Environment

ASCOT — Create real-time high fidelity interactive scenario simulations.

The Advanced Simulation Combat Operations Trainer (ASCOT) is fully integrated with C2Core and allows for easy manipulation of scenarios, creation of mission threads, vignettes and simulated errors, creating a robust and dynamic training arena. It only takes a few button clicks to import a JICO's Mission Plan into ASCOT to create executable scenarios. ASCOT easily manages the entire battlespace from single ship Close Air Support (CAS) missions to multi-axis, multi-ship Special Operations.



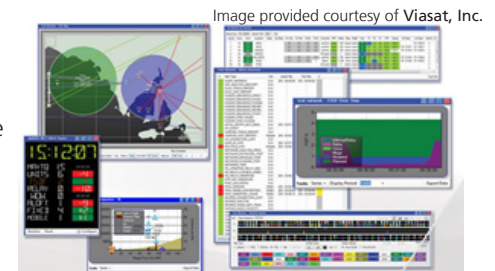
MIDS Terminal Emulation

TOES — Connect to terminals.

The Terminal Operational Environment Simulator (TOES) allows assigning of actual network designs and platform loads (.jnl, .jnl, .inde) and JU numbers to simulated terminals. Users can configure initial unit positions and simulated motion and host connection parameters. Simulated terminals are automatically created and initialized. The terminal assigned as the Network Time Reference (NTR) automatically starts net entry. Active terminals transmit and receive host-generated messages per their individual initialization loads.

ARMS — Monitor Radio Frequency network and diagnose problems.

The Amalgamated Remote Management System (ARMS) state-of-the-art link monitoring capability allows coordinated network analysis from multiple viewpoints. ARMS works with all MIDS-LVT, MIDS JTRS, and STT Link 16 radios. ARMS is designed to be an operator alert-based interface that is anomaly-event-driven allowing expeditious detection and correction of network problems.



Link Monitoring



making a difference

Ultra Electronics
ADVANCED TACTICAL SYSTEMS
4101 Smith School Road
Building IV, Suite 100
Austin, TX 78744, USA
Tel: +1 512 327 6795
Fax: +1 512 327 8043
Email: info@ultra-ats.com
www.ultra-ats.com
www.ultra-electronics.com



Ultra Electronics continually improves its products and reserves the right to change these specifications without notice.
© 2018 Ultra Electronics, Advanced Tactical Systems Inc.
Printed in the USA | V3 June 2018
APPROVED FOR PUBLIC RELEASE